

Highest safety on the water

SPORT PROTECTION

SPORT PROTECTION



### ORTHO-MAX Dynamic

The back protector ensures optimal freedom of movement and perfect breathability through perforation of the protector plate. Consists of several layers of a new viscoelastic memory foam, which allows a very high energy absorption. To protect against sharp and pointed objects, a special plastic penetration protection has been integrated in the spine.

Sizes: S - XL

Size XS	1 pc.	€ 139.00
Size S - XL	1 pc.	€ 169.00



### ONB ORTEMA Neck Brace

The ONB is made of a practically unbreakable high-performance plastic and distinguishes itself by its extremely low weight. The support in the back has the shape of a horseshoe to avoid the neck brace exerting pressure centrally on the spine.

Sizes: S - XL



ONB incl. decor-set	1 pc.	€ 349.00
---------------------	-------	----------

ONB decor-sets (orange/yellow, purple/pink, green, blue, black, white)	1 color	€ 34.00
--	---------	---------



### Lower leg protector Jet

Complete protection for the lower leg of unbreakable plastic. The protector is fixed to the lower leg with Velcro® straps, ensuring a comfortable and non-slip fit.

One size fits all (individual fabrication is possible).

Jet	1 pc.	€ 329.00
-----	-------	----------

www.ortema.de

Kitesurfing | Wakeboard | Surfing | Jetski



### ORTEMA GmbH

#### Headquarter:

Kurt-Lindemann-Weg 10 · 71706 Markgröningen · Germany  
Phone +49 7145 - 91 53 800 · Fax +49 7145 - 91 53 980  
E-Mail: info@ortema.de

ORTEMA Rehabilitation & Therapy · Phone +49 7145 - 91 53 850

ORTEMA Medical Fitness & Health · Phone +49 7145 - 91 53 770

#### ORTEMA Branch:

Pforzheim Phone +49 7231 - 13 96 667

Waiblingen Phone +49 7151 - 98 59 940

Ludwigsburg Phone +49 7141 - 99 68 720

#### ORTEMA Neckarsulm

Phone +49 7132 - 38 32 866

#### Distribution Schweiz:

Roger Infanger · infanger@ortema.ch · Phone +41 79 666 555 6

www.ortema.de



### Kiteschule Sylt

Philip Brückmann

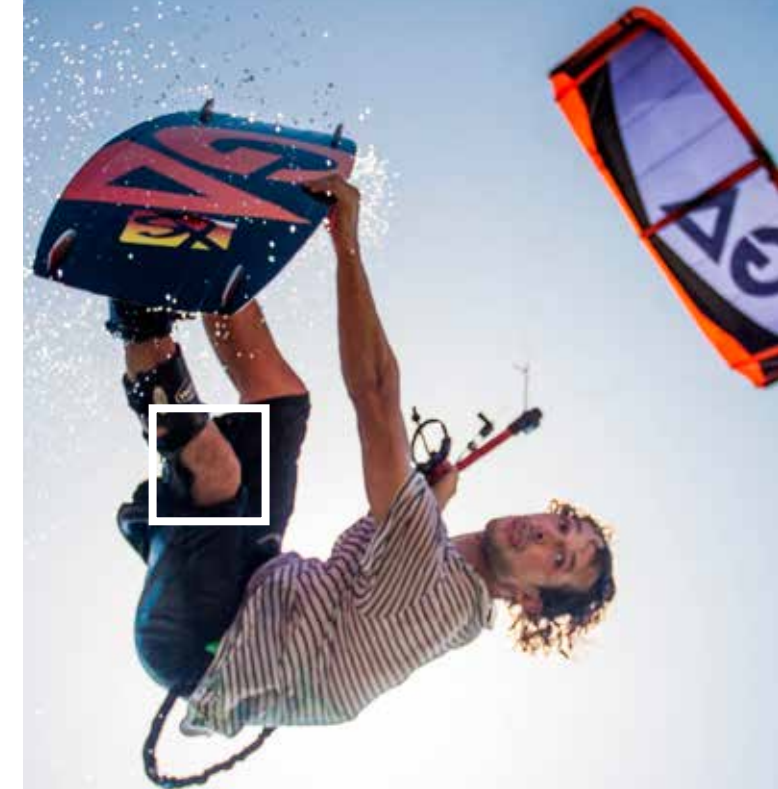
Am Ellenbogen · 25992 List / Sylt

Phone +49(0)172 - 472 17 48

info@kiteschule-sylt.de

www.kiteschule-sylt.de

Kitesurfing | Wakeboard | Surfing | Jetski



Protection is our Profession





**Partially flexible thigh and lower leg shells.** Only 1,5 mm thick shells in sandwich construction with the ability to adapt to the changing muscular relief.

**Optimal anatomical fit.** Gives optimal wearing comfort.

**Torsion-resistant, non-slipping carbon fibre construction.** Stabilizes the joint where the knee needs it most.

**Polycentric joints made of titanium.** Flat, light and extremely stable.

**Flexion and extension limitation.** Flexion adjustable.

**Counter-rotating Velcro® strap system.** Enabling the K-COM knee brace a non-slipping fit without adding to unnecessary thickness.

**Extremely light combined with stability.** Maximal stabilization of the knee with a minimum of weight.

## K-COM Knee brace

Carbon fiber and titanium

### K-COM knee brace

Carbon fiber knee brace with titanium knee joints made from a mold and **100% customized**. It can either prevent knee injuries or be used after injury of the cruciate and/ or collateral ligaments, knee surgery and osteoarthritis. The **K-COM** distinguishes itself by its perfect fit, extremely low weight with

high stability and - very important for the riders - no slipping. The thin structure and high wearing comfort round up the brace's qualities and it can be worn under the racing suit practically unnoticed. This brace protects the knee joint perfectly from injuries, making it the best of its kind and hard to beat.

**K-COM 1 pc. Price on request**

More information about the K-COM:  
 +49 (0) 7145 - 91 53 890 or send us  
 a mail: [sport-protection@ortema.de](mailto:sport-protection@ortema.de)



The video about the K-COM:

### Manufacturing of the K-COM knee brace



**1.** The plaster mold is the most exact method of obtaining a model of the athlete's leg. The anatomy is duplicated to 100 %.



**2.** To obtain a perfect fit the centre of rotation of the knee joint is exactly measured and the model altered appropriately.



**3.** The joint splints are made of a titanium material. These are integrated into the carbon fiber construction which enables a very thin and light shell of the brace combined with a maximum of stability.



**4.** Every K-COM knee brace is manufactured and fitted by technicians with years of experience. This enables every patient to get the brace made to suit his individual needs.



## X-PERT

by ORTEMA

### X-PERT knee brace

The low-priced special plastic knee brace distinguishes itself by its low weight combined with high stability. The padding material on the inside prevents a slipping of the brace and offers high wearing comfort. Polycentric mechanical joints made of a high-quality titanium copy the movement of the natural joint as closely as possible.

**Sizes:** S to XL, Size chart see on [www.ortema.de](http://www.ortema.de)

**X-PERT 1 pc. € 495.00**



Stabilizes the wrist

### Wrist brace Exoform

Stabilizes the wrist in case of overload, acute inflammatory or acute irritation, tendonitis or chronic wrist problems.

**Sizes:** S - XL

**Wrist brace 1 pc. € 119.90**